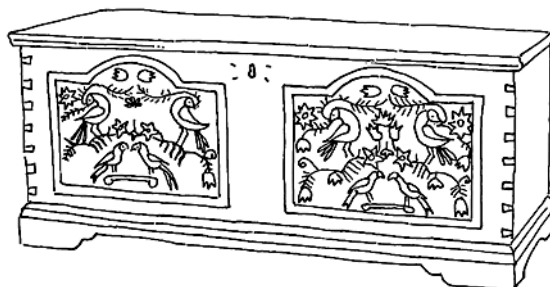


A WORLD OF COLOUR



In the old days, a girl's hope chest contained linen and bedding, which she would need for her married life. Since chests could easily be outfitted with locks, they were relatively safe places to store valuables and were ideal for carrying an emigrant's belongings on the long journey to a new land. Chests used for storage and safekeeping are often painted with decorations, while those used for transportation are usually plain or decorated with metalwork. This waxed, natural-wood chest has painted front panels that bear the traditional German symbols of tulips and pairs of birds.

©CMC CD 94-715 / 79-475